

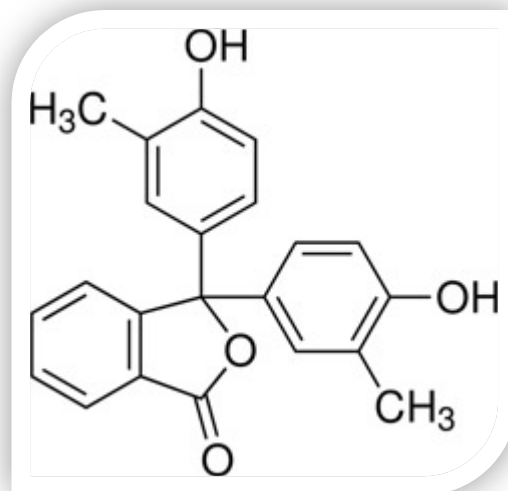
GSP CHEMICAL INDUSTRIES

o-CRESOLPHTHALEIN (PURE)

C.A.S. NO.	596-27-0
M.F.	C ₂₂ H ₁₈ O ₄
M.W.	346.38 gm/mole

SPECIFICATIONS:

Dye content	> 95%
Appearance	White – off white powder
Solubility 0.1% (EtOH)	Clear solution
Transition range	pH 8.2-9.8 Colorless – Red
Absorption maximum (0.1N NaOH) at λ_{max}	564-568nm
Absorptivity (A1%1cm in 0.1N NaOH at λ_{max})	> 1670
Loss on drying (110OC)	< 1%



GSP Chemical Industries warrants, that at the time of the quality release or subsequent retest date this product conformed to the information contained in this publication. The current Specification sheet may be available at gspchem.com. For further inquiries, please contact gspchem@gmail.com. Purchaser must determine the suitability of the product for its particular use.