

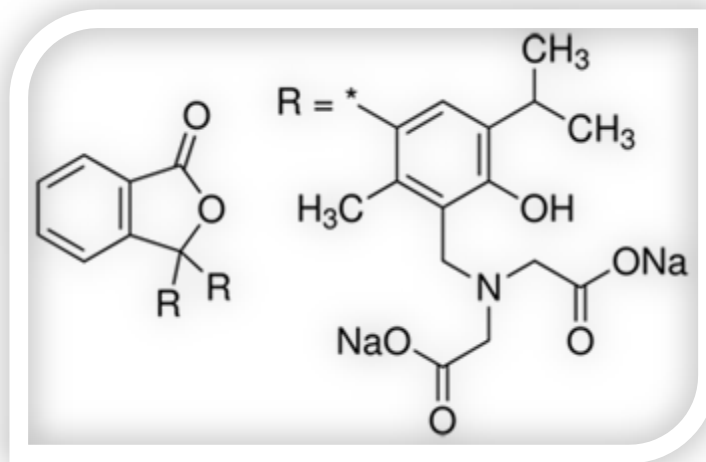
GSP CHEMICAL INDUSTRIES

THYMOLPHTHALEIN COMPLEXON16

C.A.S. NO.	1913-93-5
M.F.	C38H44O12N2
M.W.	720.78 gm/mole

SPECIFICATIONS:

Solubility 0.1% (95% Ethanol)	Clear solution
Absorption maximum (0.1N NaOH) λ_{max}	600-605nm
Absorptivity (A1%/1cm 0.1N NaOH, at λ_{max} On dried substance)	> 650
Loss on drying (110OC)	< 7%



GSP Chemical Industries warrants, that at the time of the quality release or subsequent retest date this product conformed to the information contained in this publication. The current Specification sheet may be available at gspchem.com. For further inquiries, please contact gspchem@gmail.com. Purchaser must determine the suitability of the product for its particular use.